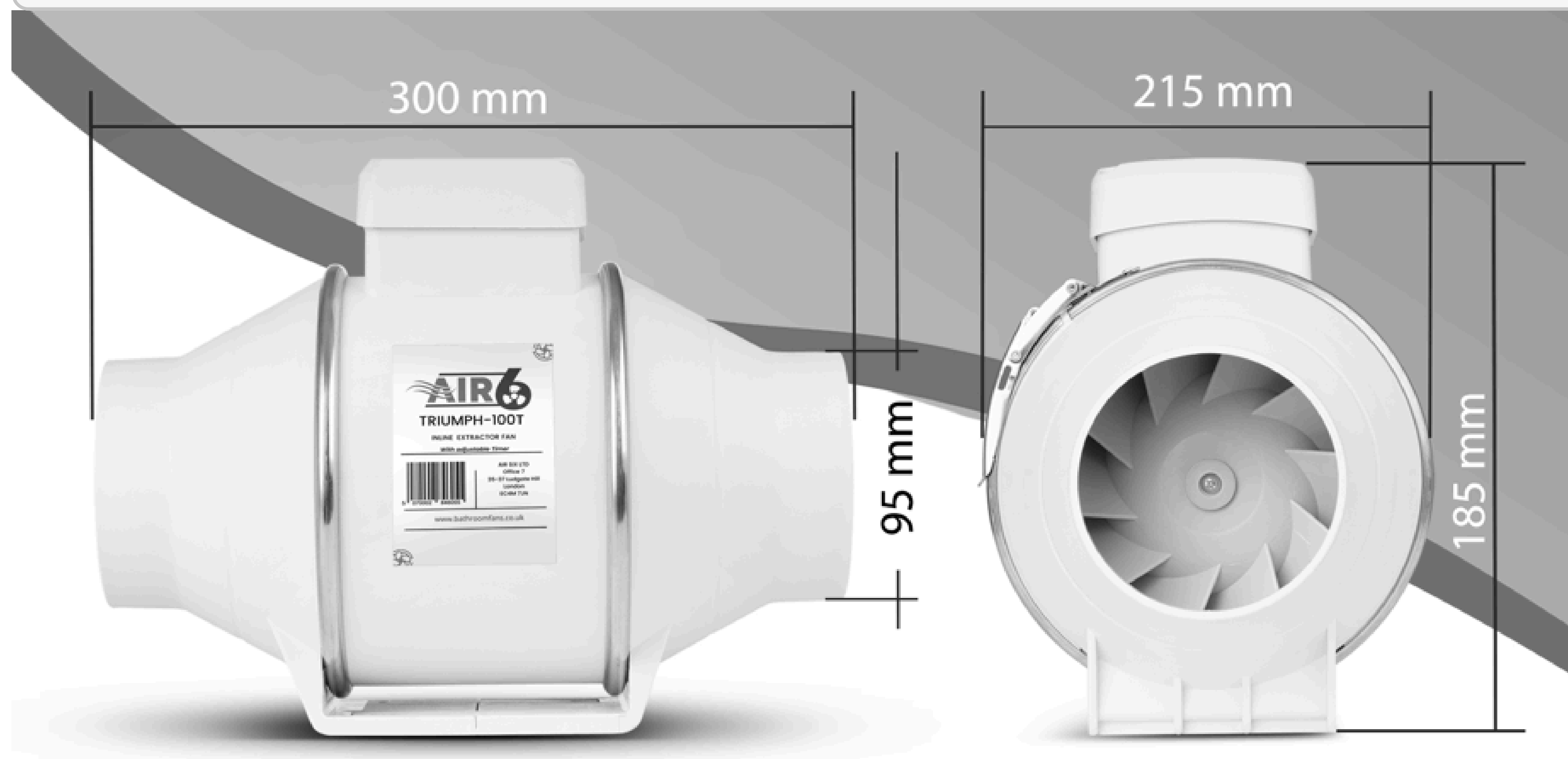


6 TECHNICAL DATA

	TRIUMPH100T	TRIUMPH125T	TRIUMPH150T
AIR VOLUME	310 m ³ /H	380 m ³ /H	540 m ³ /H
SOUND LEVEL	34 dB(A)	36 dB(A)	38 dB(A)
SPEED	2600 rpm	2600 RPM	2600 RPM
VOLTAGE	220-240V	220-240V	220-240V
POWER	40W	40W	40W



7 CONTACT INFORMATION

AIR SIX LTD
Office 7
35-37 Ludgate Hill
EC4M 7JN London
United Kingdom

FREE PHONE AND WEB

0800 699 0966
www.airsix.co.uk



TRIUMPH100T/125T/150T INSTALLATION MANUAL



INLINE EXTRACTOR FAN WITH ADJUSTABLE TIMER

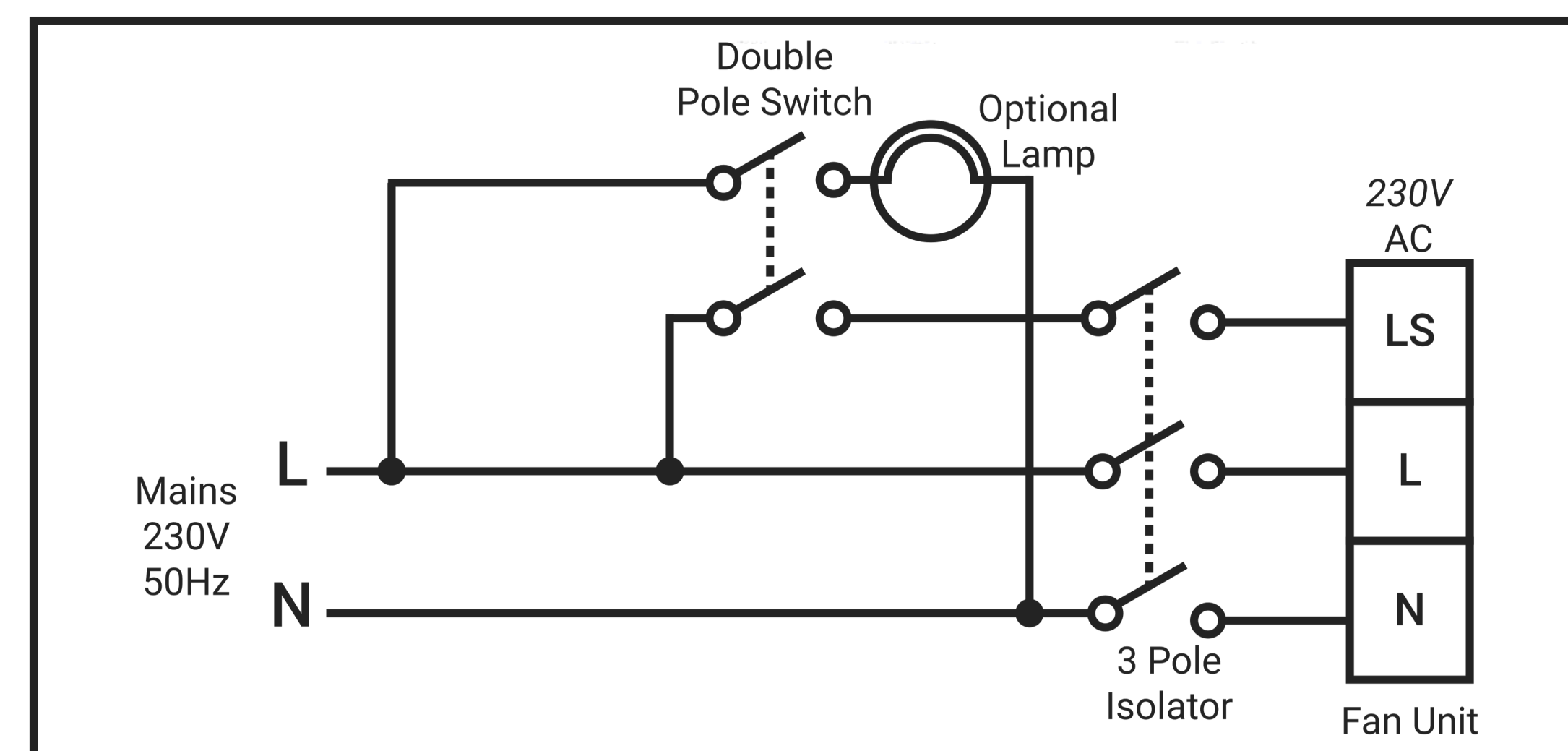
1 PRODUCT INTRODUCTION

This INLINE extractor fan is a mechanical ventilation unit designed to be used in the kitchen or bathroom to ensure adequate ventilation and moisture extraction.

Please read the instruction manual before installing the unit.

It is recommended that the unit would be installed by a qualified electrician.

2 WIRING DIAGRAM



The Inline Fan got to be connected to a single phase mains network 220-240 VAC. The installation must have a Fused Connection Spur and the circuit must be protected by either 3 AMP fuse or suitable 3A MCB. Earth wire is not required as this extractor is class II insulated appliance.

3 INSTALLATION AND MAINTENANCE

For installation & maintenance Triumph model can be easily disassembled.

Please remove the motor as shown in the image and fix the brackets in position where the extractor will be located.

Connect the wiring by following the fig2 wiring diagram and regulations.

Insert the motor back.

Connect the inlet and outlet ductings.

Before completing the installation please ensure the impeller is running freely.

The impeller must be cleaned at least once a year for a long term operation.

Use the damp cloth only and no strong detergents.



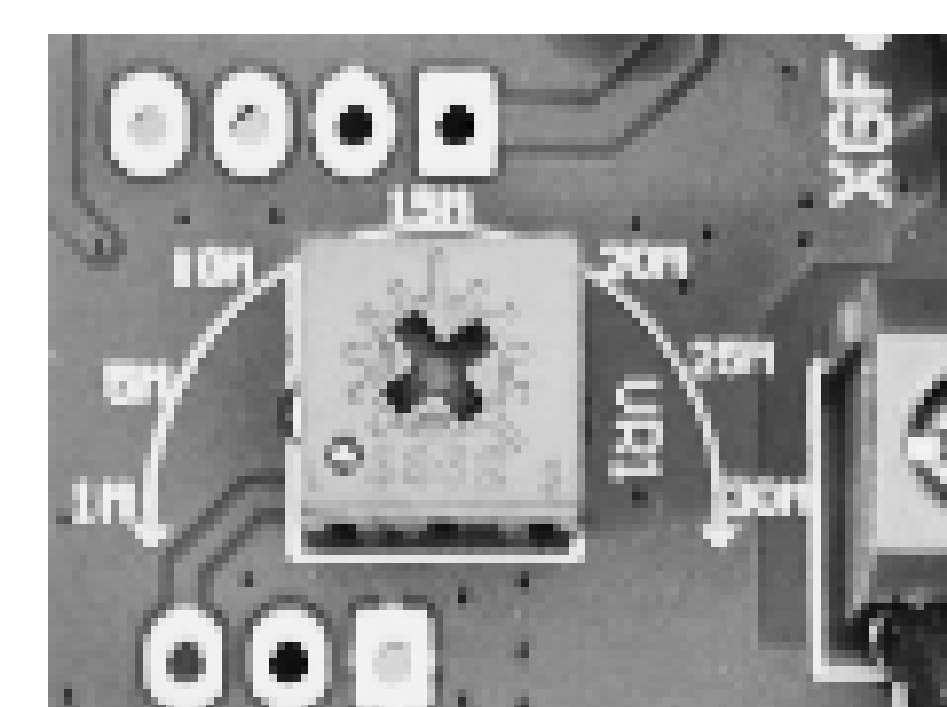
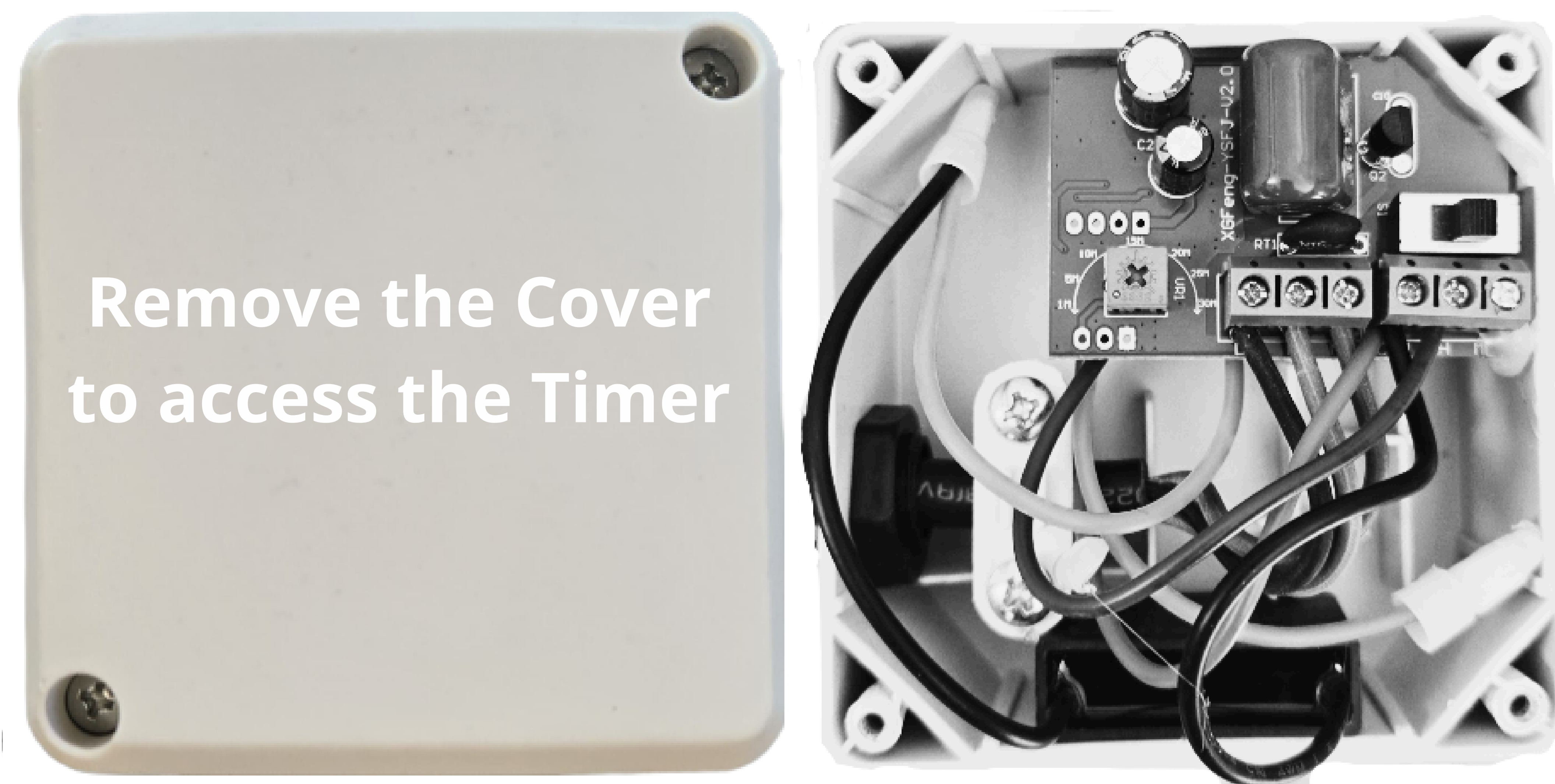
4 CAUTIONS & WARRANTY

Please ensure that the unit and any controls are electrically isolated from the electric supply before doing any work. The electrical system must comply with the countries of installation electrical regulations.

The 2-year warranty starts from the day of delivery and includes parts and labour. Warranty might be void if the extractor fan is modified, misused or disassembled not in accordance to this manual or regulations.

To register the unit for extended 3 Years Warranty please visit www.airsix.co.uk

5 ADJUSTABLE TIMER DIAGRAM AND INSTRUCTIONS



TIMER ADJUSTING KNOB

This model is provided with an adjustable over-run timer.

The timer allows the fan to continue to operate for the selected period of time after the Light Switch has been turned Off.

With light switch connection

Once the light switch has been turned Off the Extractor Fan will continue to operate for certain amount of time set and then shuts down.

To set the Timer, turn the control knob on the circuit board as shown in the picture above.

- To reduce the "run on" time, turn the control knob anticlockwise (min: 30 seconds)
- To increase the "run on" time, turn the control knob clockwise (max: 30 minutes).

Without light switch connection if there's no LS connection available the extractor fan can still be used, but you would not have the timer function. the extractor will simply turn on / off with the switch controlling it